

INDUSTRIAL FLOOR MATTING

Industrial Floor Matting

Spill-Resistant Safety & Anti-Fatigue Matting

Nyracord is a tough, durable, "almost indestructible" combination of tough fibers and rubber blended to give you the finest industrial floor matting on the market today.

Nyracord Grease Resistant Counter Tred

- Heavy duty 1/2" thick Nyracord
- Unique ribbed pattern for sure footing
- Promotes safety in wet or oily areas and reduces fatigue
- The ribbed underside permits aeration and drainage while 1/2" thick mat stays in place and does not curl
- Ideal for machinery in machine shops
- Grease resistant Counter Tred provides better footing where water, petroleum greases or oils cause slippery conditions

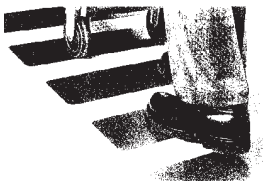


24" x 22 Ft. Roll	\$312.20 / Roll
36" x 22 Ft. Roll	\$459.00 / Roll
48" x 22 Ft. Roll	\$562.40 / Roll

Sure Step Abrasive Treads

- Use in moist, oily or greasy areas; excellent for ramps, around ladders, hallways, stairways and truck steps
- Diamond hard mineral surface with waterproof, self-adhesive backing
- Installs easily on dry, oil free surfaces 40° to 220°F; can be used immediately
- Bonds over 90° angles; is unaffected by climate, mild acid or alkali exposure

1" x 60 Ft. Roll
2" x 60 Ft. Roll
4" x 60 Ft. Roll
6" x 60 Ft. Roll
12" x 60 Ft. Roll



\$25.00 / Ea
\$39.95 / Ea
\$79.90 / Ea
\$119.90 / Ea
\$215.88 / Ea

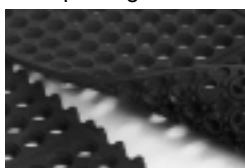
5-1/2" x 5-1/2" Precut
6" x 24" Precut

\$1.25 / Ea
\$4.70 / Ea

Food Service Matting

5/8" Beveled Foodservice Mats

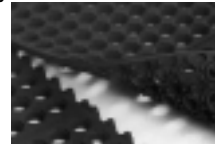
- Heavy duty; hygienically designed drain holes which allow liquid and debris to drain through; prevents bacteria build-up
- Anti-slip raised rib design provides superior traction in wet and dry areas
- This 5/8" thick, high-quality rubber mat provides cushioned comfort to reduce worker fatigue and increase productivity
- Easy clean up with soap and water
- Built in connectors for placing mats end to end



5/8" x 3' x 5', Multi-purpose, Black	\$53.35 / Ea
5/8" x 3' x 5', Grease Resistant, Red	\$74.15 / Ea

1/2" Beveled Light Foodservice Mat

- Flexible, heavy duty molded rubber mat with drain through holes; ideal where oil, grease, and other liquids are present
- Lightweight; makes it easy to lift off the floor for simple cleaning with soap and water
- Non-slip surface; Features molded beveled edging for added safety and easy cart access

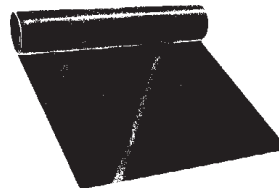


1/2" x 3' x 5', Multi-purpose, Black	\$374.75 / Ea
1/2" x 3' x 5', Grease resistant, Red	\$548.65 / Ea

Spike Resistant Matting

Nyracord Smooth Runner

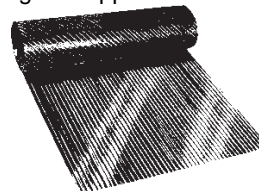
- Smooth runner is spike, cleat and skate resistant, making it ideal for locker rooms, pro shops and public rinks
- Provides maximum safety against tripping or slipping
- Perfect for use in corridors, aisles and assembly areas



3/16" x 36" x 22 ft. roll	\$239.80 / Roll
1/4" x 36" x 22 ft. roll	\$290.40 / Roll
3/8" x 36" x 22 ft. roll	\$341.00 / Roll

Nyracord Perma Walk

- Designed with corrugations running length of mat for easy cleaning
- Reduces slipping and falls in heavy traffic areas, aisle, locker room and assembly areas
- 1/4" thick Nyracord construction offers years of service and good appearance



36" x 22 Ft. Roll	\$273.90 / Roll
48" x 22 Ft. Roll	\$416.90 / Roll

Fitness Matting

Physical Fitness Mat

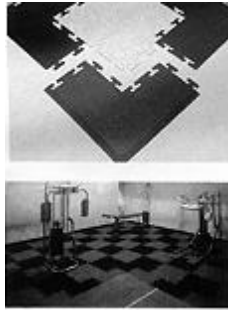
- Molded rubber mat made of 95% post consumed recycled rubber
- Designed to withstand heavy physical fitness equipment
- Great for exercise and weight rooms
- Textured surface resistant to cracks, provides durability even under ice skates



1/2" x 4' x 6', Black	\$114.65 / Ea
-----------------------	----------------------

Phys-Fit-100 Interlock Floor Tile

- Mats provide protection from weights
- Durable rubber interlocking floor system absorbs shock and noise from gym equipment
- Pebbled surface adds traction and will not crack, tear, or wrinkle
- Not suitable for outdoors, spike shoes, or greasy areas



Available in Gray, Black, Burgundy, or Blue. Please specify color when ordering.

Center Tile, 7/16" x 24" x 24"	\$40.75 / Ea
Border Tile, 7/16" x 12" x 24"	\$20.45 / Ea
Outside Corner Tile, 7/16" x 12" x 24" x 24"	\$30.45 / Ea

"Air Strip" Anti-Fatigue and Weight Bench Matting

- Modular, interlocking, rubber anti-fatigue mat
- Molded "air pockets" beneath mat provide a buoyant, comfortable surface to relieve fatigue
- Solid rubber is slip resistant, wet or dry
- Beveled borders eliminate tripping; improves safety
- Non-directional surface pattern offers excellent traction
- 1/2" thick; Black only



	Regular	Grease Resistant
Single, 28" x 36"	\$27.95 / Ea	\$31.95 / Ea
Centers or Ends, 28" x 36"	\$27.95 / Ea	\$31.95 / Ea
Centers or Ends, 36" x 24"	\$27.95 / Ea	\$ 31.95 / Ea

Entrance Matting

Olefin Blotter Entryway Mats

- Durable dyed olefin yarn mats not only make a great entryway mat, they also help protect your floor
- Made of 17 oz. of 100% continuous filament olefin yarn per square yard, fused to a 65 mil durable solid vinyl back, make these mats long wearing
- These mats trap over 1 gallon of water per square yard and dry faster than other mats



3 Ft. x 4 Ft. Mat Size	\$30.60 / Ea
3 Ft. x 5 Ft. Mat Size	\$38.25 / Ea
3 Ft. x 6 Ft. Mat Size	\$45.90 / Ea
3 Ft. x 10 Ft. Mat Size	\$76.50 / Ea
4 Ft. x 6 Ft. Mat Size	\$61.15 / Ea
4 Ft. x 8 Ft. Mat Size	\$81.60 / Ea

Spectra-Rib Mats

- Traps dirt and moisture and can be used inside or out
- Easily cleaned with a vacuum or broom
- Works as a scraping mat
- Made with 26 oz. of deep rib 100% polypropylene needle punch fibers per square yard and fused to a 75 mil vinyl backing

Must specify color when ordering: blue, green, tan, charcoal, red, brown, or grey



3 Ft. x 4 Ft.	\$35.05 / Ea
3 Ft. x 5 Ft.	\$43.80 / Ea
3 Ft. x 6 Ft.	\$52.45 / Ea
3 Ft. x 10 Ft.	\$87.60 / Ea
4 Ft. x 6 Ft.	\$70.10 / Ea
4 Ft. x 8 Ft.	\$93.50 / Ea
4 Ft. x 10 Ft.	\$116.95 / Ea

Finger Scraper Outdoor Entrance Mats

- Withstands heavy foot traffic
- Tough rubber fingers clean dirt, grit, snow and sand from shoe soles
- Dirt trapped in base of mat is removed by shaking or turning mat upside down



24" x 32" Black Rubber Mat	\$51.00 / Ea
28" x 42" Black Rubber Mat	\$80.15 / Ea
36" x 72" Black Rubber Mat	\$153.75 / Ea

Carpet Protection Matting

Transparent Vinyl Runner

- Clear runner protects carpet in high traffic areas allows carpet to show through
- Made of heavy duty 1/8" vinyl with 1/4" long gripper spikes which hug carpet and resist movement
- Top surface has non-slip corrugations with tapered edges
- Resists most oils and chemicals

Note: Buy in full rolls for best price.



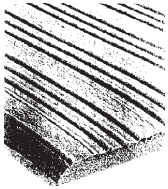
1/8" x 27" x 60 Ft. (full roll)	\$217.80 / Ea
1/8" x 36" x 60 Ft. (full roll)	\$426.60 / Ea
1/8" x 48" x 60 Ft. (full roll)	\$567.90 / Ea

INDUSTRIAL FLOOR MATTING

Anti-Fatigue Matting

Tuff-Spun Vinyl Sponge Matting

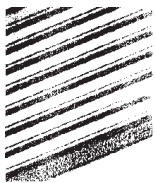
- Durable sponge vinyl with corrugated surface traps dirt; reduces slipping and is easily cleaned with vacuum or broom
- Rounded edges lay flat-won't curl
- Reduces noise, cushions dropped tools
- Not recommended in wet or oily areas
- Available in black, brown or gray



3/8" x 27" x 36" Mat	\$22.30 / Ea
3/8" x 27" x 60" Mat	\$36.10 / Ea
3/8" x 36" x 60" Mat	\$42.40 / Ea

Super Sponge Anti-Fatigue Matting

- Extra thick sponge vinyl for cushion and foot comfort
- Ribbed pattern provides traction and easier cleaning
- Fully beveled edges for added safety
- Not recommended in wet or oily areas
- Available in black, brown or gray



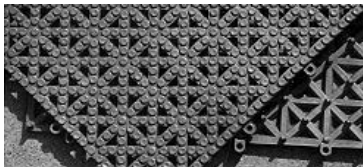
5/8" x 24" x 36" Mat	\$34.68 / Ea
5/8" x 36" x 48" Mat	\$65.43 / Ea
5/8" x 36" x 60" Mat	\$81.77 / Ea
5/8" x 48" x 72" Mat	\$130.22 / Ea

Wet Area Carpet, Mats & Tile

Safety Slip Tile

- Fantastic for drainage and anti-fatigue applications
- Use as an entire floor or just around a given area
- Bevel edging available for transitional areas
- Resistant: grease, acids, bacteria, non-conductive, oils, fats, alkalis
- Maintenance: use mild detergent as needed, hose down

Available in brown, red, yellow, blue, beige, green, gray and black. Please specify color when ordering.



Center Tile, 1/2" x 12" x 12"	\$5.10 / Ea
Beveled Border, 1/2" x 12" x 2"	\$2.20 / Ea
Beveled Corner, 1/2" x 2" x 2"	\$1.25 / Ea

Vinyl Tube Type and Grip Type Mats

- Anti-slip, anti-fatigue, drainage mats offer a safer, drier, more comfortable place to walk or stand
- Ideal for showers, pool decks, restaurants, machine shop, etc.
- Resistant: oils, grease, mold, mildew, acid, bacteria, fats, alkalis

Available in black, blue, brown, gray, green, orange, and red. Please specify color when ordering.

Tube Type

- Hollow tubes run length of the roll and are bonded to solid tubes that run the width on the underside



1/2" x 2' x 40'	\$453.40 / Ea
1/2" x 3' x 40'	\$671.30 / Ea
1/2" x 4' x 40'	\$895.20 / Ea
2' Wide Cut Lengths	\$16.45 / Lin. Ft
3' Wide Cut Lengths	\$24.35 / Lin. Ft
4' Wide Cut Lengths	\$32.45 / Lin. Ft

Grip Type

- Raised embossing on surface of solid tubes that run length of the roll



1/2" x 2' x 40'	\$712.30 / Ea
1/2" x 3' x 40'	\$1,047.15 / Ea
1/2" x 4' x 40'	\$1,355.65 / Ea
2' Wide Cut Lengths	\$27.60 / Lin. Ft
3' Wide Cut Lengths	\$40.55 / Lin. Ft
4' Wide Cut Lengths	\$54.70 / Lin. Ft

Poolside Carpeting

- Fashionable carpeting designed for use around drainage areas such as pools, hot tubs, etc.
- Unique PVC knob backing allows water to drain through, leaving it virtually dry at all times

Available in green, blue, driftwood, silver. Please specify color when ordering.



Poolside

5/16" x 78" x 70'	\$1426.50 / Ea
Cut lengths 5/16" x 78" wide	\$21.70 / Lin. Ft.

Poolside Rib

1/4" x 78" x 70'	\$1,445.65 / Ea
Cut lengths 1/4" x 78" wide	\$22.05 / Lin. Ft.